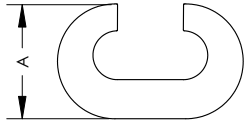
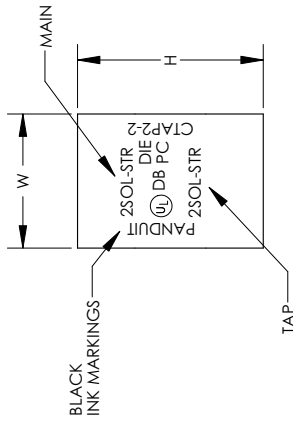


THIS COPY IS PROVIDED ON A RESTRICTED BASIS AND IS NOT TO BE USED IN ANY WAY DETRIMENTAL TO THE INTERESTS OF PANDUIT CORP.



NOTES:

- FOR COPPER TO COPPER CONNECTIONS ONLY.
- UL LISTED PER UL 486A FOR POWER CONNECTOR APPLICATIONS UP TO 35KV.
- UL LISTED PER UL 467 FOR GROUNDING AND BONDING AND FOR SUITABLE DIRECT BURIAL IN EARTH OR CONCRETE.
- UL TEMPERATURE RATING 90°C
- UL FLAMMABILITY RATING FOR DVR COVERS IS V-0.
- CVR COVERS ARE NOTE UL LISTED WITH CTAP CONNECTORS.
- MATERIAL: HIGH CONDUCTIVITY COPPER
- PACKAGING QTY CODES: -L=50  
-Q=25  
-X=10

9. CT-940CH AND CT-2940 REQUIRE CD-940-DA ADAPTER FOR CD-920 DIES



PANDUIT PART NUMBER	COPPER CONDUCTOR SIZE		DIMENSIONS			TAP COVER P/N (REF)	PANDUIT GRIMP TOOL PART NUMBERS		WIRE STRIP LENGTH (+/- 0.25")
	MAIN	TAP	W	A	H		DIE PART NO. (DIE INDEX NO. IF OF GRIMPS)	CT-2001 DIE PART NO. (DIE INDEX NO. IF OF GRIMPS)	
CTAP4-8-L	#6-#4 SOL OR STR	#8 SOL OR STR	0.63	0.46	0.73	CVR6-1	CD900-BG P03 P06 (1)	CT-2001 P03 P06 (1)	3/4
CTAP4-6-L	#6 STR, #4 SOL OR STR	#6 SOL OR STR	0.63	0.48	0.73	CVR6-1	CD900-BG P03 P06 (1)	CD-2001-BG P03 P06 (1)	3/4
CTAP4-4-L	#4 SOL OR STR	#4 STR	0.63	0.46	0.81	CVR6-1	CD900-BG P03 P06 (1)	CD-2001-BG P03 P06 (1)	3/4
CTAP2-4-Q	#2 SOL OR STR	#8-#4 SOL OR STR	0.76	0.60	0.96	CVR2-1	CD920-C P03 P06 (1)	CD-2001-C P03 P06 (2)	7/8
CTAP2-2-X	#2 SOL OR STR	#2 SOL OR STR	0.75	0.60	1.05	CVR2-1	CD920-C P03 P06 (1)	CD-2001-C P03 P06 (2)	7/8
CTAP2/0-2-X	#1/0-#2/0 STR	#8-#2 SOL OR STR	0.93	0.80	1.32	CVR2-1	CD920-O P03 P06 (1)	*****	1-1/16
CTAP2/0-2/0-X	#1/0-#2/0 STR	#1/0-#2/0 STR	0.93	0.80	1.37	CVR250-1	CD920-O P03 P06 (1)	*****	1-1/16
CTAP4/0-2-X	#3/0-#4/0 STR	#6-#2 SOL OR STR	1.08	0.94	1.66	CVR500-1	CD920-D3 P03 P06 (1)	*****	1-1/4
CTAP4/0-2/0-X	#3/0-#4/0 STR	#1/0-#2/0 STR	1.08	1.00	1.57	CVR500-1	CD920-D3 P03 P06 (1)	*****	1-1/4
CTAP4/0-4/0-X	#3/0-#4/0 STR	#3/0-#4/0 STR	1.08	1.00	1.57	CVR500-1	CD920-D3 P03 P06 (1)	*****	1-1/4

REV	DATE	BY	CHK	DESCRIPTION	ECN	PM	CUST	FLD
06	4/10	JHNU	JHNU	REVISED DWG NUMBER: 10N0028A-NC WAS C41220 CONVERTED DWG TO SOLIDWORKS	10N0028A-NC			
05	10/09	JESH	JESH	UPDATED TABLE TAP COVER P/N REF. TAP COVERS ARE REPLACED WITH CVR COVERS				
				ADDED NOTES				
04	2/02	SAB		ADDED DB TO THE STAMP. ADDED NOTES 6 & 7	09827	LM	JAC	
03	1/02	SAB	JAC	ADDED WIRE CONNECTOR UNDER THE UL SYMBOL	09788	LM	JAC	
02	11/01	BDK	RLS	REMOVED CTAP2-4-L, CTAP2-2-L, ADDED TOOLING INFORMATION AND UPDATED TABLE. UPDATED THE NOTES - AND ADDED BLACK INK MARKINGS LEADER.				
				REMOVED CTAP2-4-L, CTAP2-2-L, ADDED TOOLING INFORMATION AND UPDATED TABLE. UPDATED THE NOTES - AND ADDED BLACK INK MARKINGS LEADER.	09328		JAC	
01	5/01	ED	SKB	REVISED TABLE TO REFLECT PRODUCT EXPANSION	09354		JAC	
00	9/97	TM	WJB	RELEASED	06270	DH	LA	

**PANDUIT** CORP. TINLEY PARK, ILLINOIS  
CTAP COPPER COMPRESSION TAPS  
CUSTOMER DRAWING

UNLESS OTHERWISE SPECIFIED, DIMENSIONAL TOLERANCES ARE:  
(X) ±  
(XX) ±  
(XXX) ±  
ANGLES ±  
SCALE NONE  
DRAWN BY: TSM/A  
DATE: 9/97  
CHK'D: WJB  
DWG NO / CAD FILE: 10N0028A-NC  
DWG SIZE: B